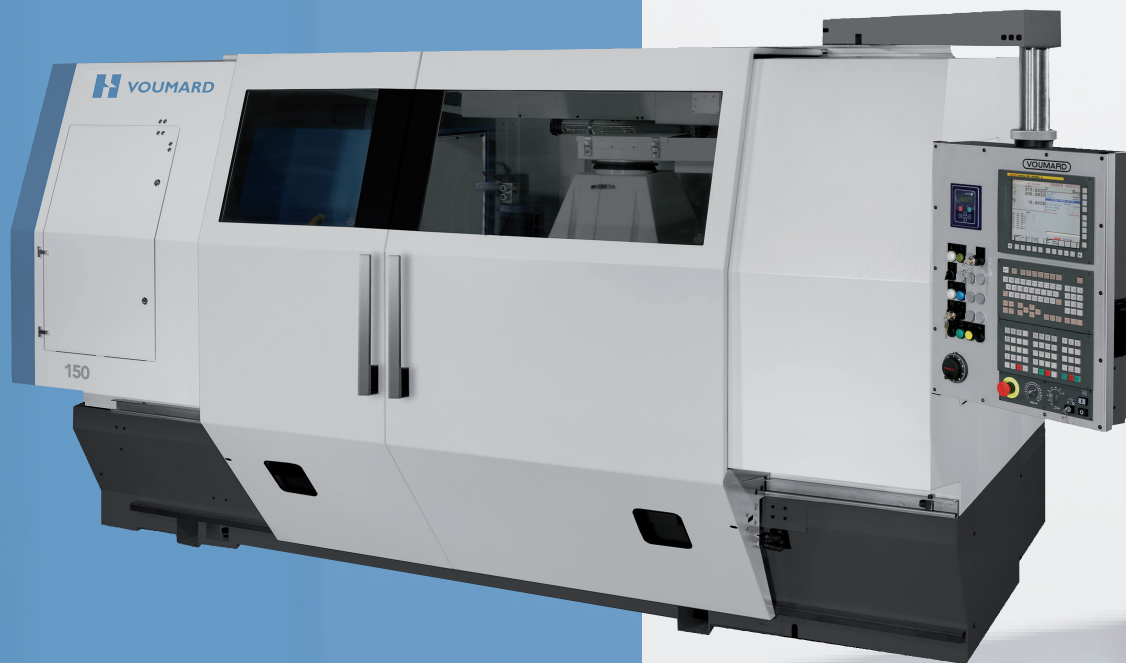


VOUMARD 150

Universal ID/OD
Grinding Tool for Medium
to Large Sized Work Pieces



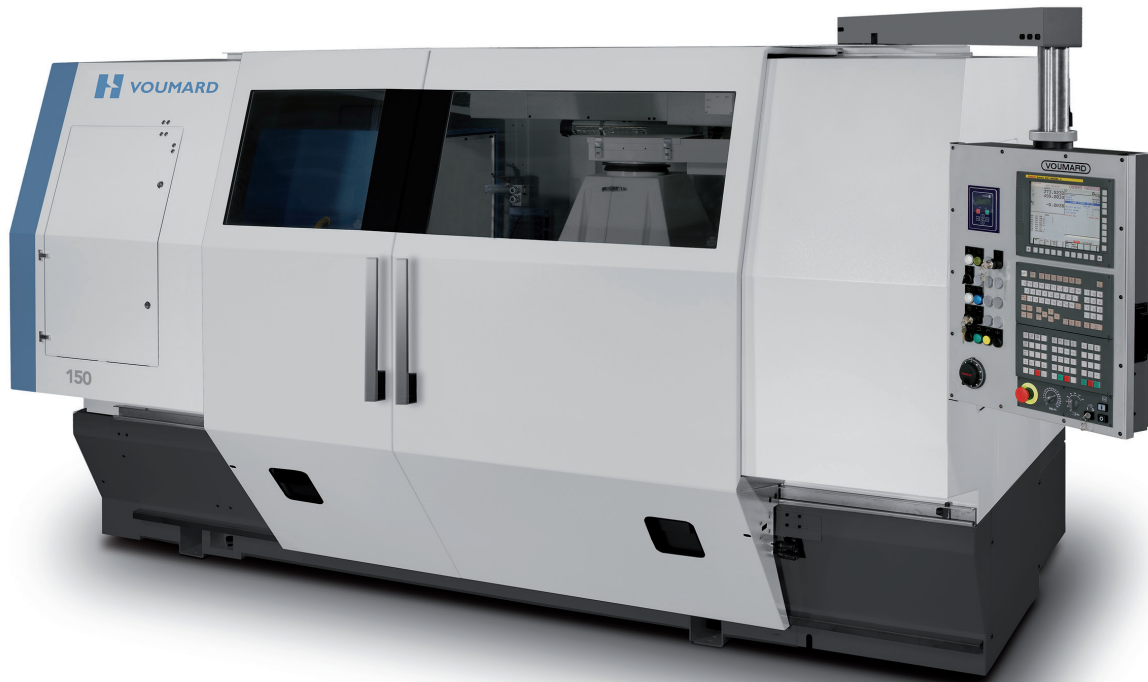
VOUMARD
WWW.HARDINGE.COM

 **HARDINGE®**

VOUMARD 150

LATEST TECHNOLOGY AS STANDARD

Highest Precision for all
Materials and Industries



The VOUMARD 150 is a multi-purpose tool for ID/OD grinding operations with medium to large sized work pieces in small batches as well as in volume production. While short work pieces can be ground directly when clamped in the chuck, a variety of manual and automatic steady rests is available for grinding operations with long shafts.

Typical applications are grinding operations with parts for:

- Hydraulic components
- Spindles
- Bearings
- Gears

EQUIPMENT:

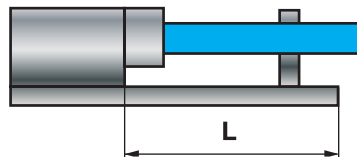
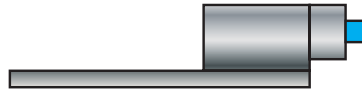
- Four position NC indexing spindle turret permits multiple ID/OD grinding operations with different grinding wheels at the same work piece and combines maximum flexibility with highest grinding accuracy
- High precision X- and Z-axis
- Manual or numerical controlled B-axis for angular swivel of the workhead for taper grinding
- Optional work head spindle indexing (C-axis)
- Various dressing tools for conventional and CBN grinding wheels

CONTROL:

- Fanuc CNC with proprietary VOUMARD graphical user interface
- Offline programming tool on external computer minimizes downtime when creating new grinding sequences
- Remote diagnosis system for quick trouble shooting

VOUMARD 150

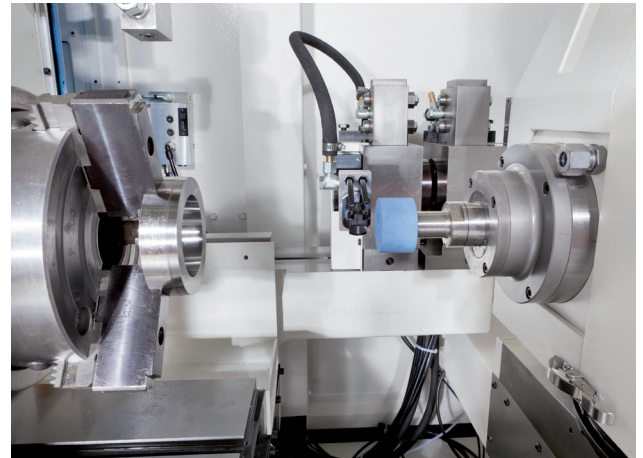
Grinding of short work pieces in a chuck, applicable on every machine model



Grinding of long work pieces in a steady rest

3 versions are available:

Machine Version	Length L	B Axis Swivel Range
L7	700	max. 15°
L15	1500	max. 10°



Working area with clamped work piece and grinding spindle

VOUMARD 150 – THE MAIN TECHNICAL CHARACTERISTICS

Grinding capacities	internal diameter, up to max. external diameter	200 mm + grinding wheel Ø 260 mm - grinding wheel Ø	
	max. recommended depth	250 mm	
Chuck max. dimensions (swing diameter)	a) in standard splash guard	380 mm	
	b) over workhead table	350 mm	
	c) in the gap	500 mm	
Chucking equipment, according to model	programmable rotation speed	0 ÷ 850 min ⁻¹ or 560 min ⁻¹	
	max. compounded weight	200 or 250 daN / 100 mm	
	axial clamping force	750 or 1200 daN	
X and Z axes	useable X travel	230 mm	
	useable Z travel	500 mm	
	resolution	0.1 µm	
	max. traverse speed	X = 10 m min ⁻¹ / Z = 20 m min ⁻¹	
Centre height	over workhead table	200 mm	
Floor space	L x D x H	version L7	3500 x 2000 x 2150 mm
		version L15	4450 x 2000 x 2150 mm
Weight	According to version		5000 to 6000 kg

All informations contained in this document are subject to change without notice

INTERNAL AND EXTERNAL GRINDING PERFECTION

VOUMARD high productivity grinding machines are designed for flexible ID and OD grinding operations. Highly accurate chucks and centerless work holding solutions allow for processing work pieces of almost every geometry and performing multiple internal and external grinding operations in a single clamping.

The VOUARD machine range provides every customer with both high productivity and high flexibility grinding solutions. Our machines are appreciated world-

wide and integrated in production lines or manufacturing workshops of market-leading companies in major industry segments like automotive, aerospace, bearing, tooling and spindle manufacturing.

VOUMARD systems are suitable for a large variety of parts manufactured in large batches (like diesel common rail and hydraulics-pneumatics components) or low quantities (like high precision bearings and machines spindles components).



HARDINGE WORLDWIDE

Hardinge is a leading international provider of advanced metal-cutting solutions. We provide a full spectrum of highly reliable CNC turning, milling, and grinding machines as well as technologically advanced work-holding accessories.

The diverse products we offer enable us to support a variety of market applications in industries including aerospace, agricultural, automotive, construction, consumer products, defense, energy, medical, technology, transportation and more.

We've developed a strong global presence with manufacturing operations in North America, Europe, and Asia. Hardinge applies its engineering and applications expertise to provide your company with the right machine tool solution and support every time.

AMERICAS

Pennsylvania
Hardinge Corporate
1235 Westlakes Drive
Suite 410
Berwyn, PA 19312

New York
Hardinge
One Hardinge Drive
Elmira, NY 14903
P. 800-843-8801
E. info@hardinge.com
www.hardinge.com

Illinois
Hardinge
1524 Davis Road
Elgin, IL 60123
P. 800.843.8801

ASIA

China
Hardinge Machine
(Shanghai) Co. Ltd.
1388 East Kangqiao Road
Pudong, Shanghai 201319
P. 0086 21 3810 8686

Taiwan
Hardinge Taiwan Precision
Machinery Limited
4 Tzu Chiang 3rd Road
Nan Tou City 540
Taiwan
P. 886 49 2260 536
E. cs@hardinge.com.tw

EUROPE

France
Jones & Shipman SARM
8 Allee des Ginkgos
BP 112-69672
Bron Cedex, France

Germany
Hardinge GmbH
Fichtenhain A 13c
47807 Krefeld
P. 49 2151 49649 10
E. info@hardinge-gmbh.de

Switzerland
L. Kellenberger & Co. AG
Heiligkreuzstrasse 28
CH 9008 St. Gallen
Switzerland
P. 41 71 2429111
E. info@kellenberger.net

United Kingdom
Jones & Shipman
Hardinge Ltd.
Europark, Unit 4 Watling Street
Rugby CV23 0AL, England
P. 44 116 201 3000
E. info@jonesshipman.com



WWW.HARDINGE.COM

All prices and specifications are subject to change without notice.
All marks indicated by ® and ™ are trademarks of their respective owners.
#1211-1E © Hardinge Inc. • 07/19