

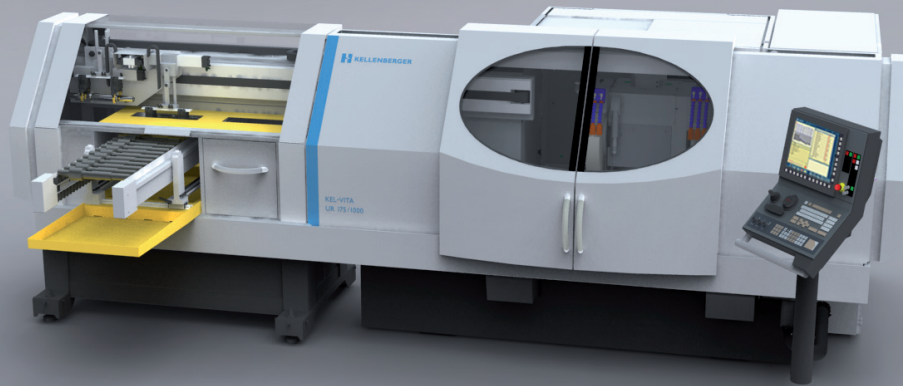
## HANDLINGSYSTEM

- KEL-PORTAL for small and medium sized batches
- Quick changeover times for a wide range of parts

# KEL-PORTAL

The new handling system for the KEL-VITA

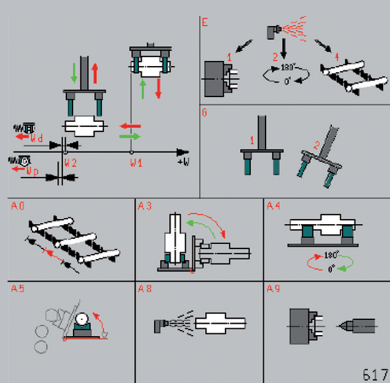
## OVERVIEW



## FEATURES

- A wide range of applications for flexible and universal use
- Quick changeover time (< 15 min!) because of integrated controls with parameter software
- Economical full solution including gripper set and NIO/SPC delivery
- A Kellenberger product, Swiss made, so it is a high quality product with no interface problems
- Use for lot sizes starting at 20 up to circa 5,000 units, but single parts can also be processed without difficulty
- Reduction of costs through multiple machine operation, minimal training and quick setting
- The machine can be used with and without handling system
- User interface with help images and programming through icons

## SPECIFICATIONS

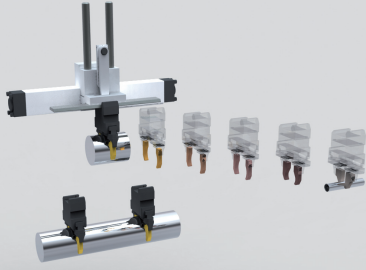


Workpiece diameter	mm	< 100
Gripping diameter	mm	6 - 80
Length of shafts	mm	< 400
Length of chuck parts	mm	< 120
Weight	kg	5
Loading cycle time	s	15 - 20
Workpiece change time	s	4 - 5 (excl. work-holding fixture)
Positioning accuracy	mm	± 0.15 (overall system)
Capacity	pieces	27 at Ø < 38 13 at Ø < 75 9 at Ø < 100



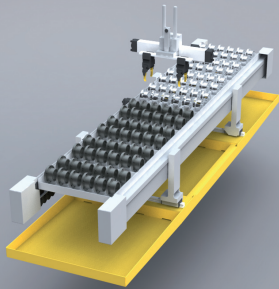
www.kellenberger.com

 **KELLENBERGER**



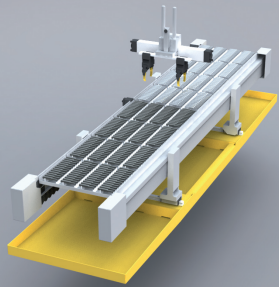
### Gripper concept

Thanks to the new gripper concept, it is possible to hold workpiece diameters of 6 – 80 mm with only 6 grippers. The required positions and gripper diameters are marked directly on the elements.



### Fixed cycle conveyer

The prism sequencer can be adjusted vertically and horizontally independent of the workpiece using the adjusting mechanism. Here the prism chain can be adjusted to a workpiece length of up to 400 mm.



### Pallet system

Standardized pallets can be placed on the prism sequencer. These are adjustable and are available with different arrays of rows and cycle intervals.

Autonomy example:  
312 workpieces with a diameter of 19 mm and a length of 60 mm.

## OPTIONS

- Workpiece holder for up to 312 workpieces
- Customer-specific grippers
- Additional grippers for long and/or unsymmetrical shafts
- Spring-mounted pressure locator for chuck parts
- Air blast station inside casing

## OUR TECHNOLOGY – YOUR ADVANTAGE

### Flexibility

- Separate pieces can also be processed without the loading system
- Parameter programming
- ICON programming
- Lot sizes of 20 up to 5,000 workpieces

### Customer benefits

- Multiple machine operation possible
- Full processing in one setting, also for chuck parts
- Changeover time max. 15 minutes
- Machine doors remain closed even during change of workpiece (accuracy, reproducibility)

### L. Kellenberger & Co. AG

Heiligkreuzstrasse 28  
9009 St.Gallen / Switzerland  
Telefon +41 (0) 71 242 91 11  
Fax +41 (0) 71 242 92 22

### L. Kellenberger & Co. AG

Längfeldweg 107  
2500 Biel-Bienne 8 / Switzerland  
Telefon +41 (0) 32 344 11 52  
Fax +41 (0) 32 341 13 93